

# STRATEGIC DIRECTIONS

FY 2017-2022

# Vision

## Long-Term Vision

We dream of Filipinos who passionately love their country and whose values and competencies enable them to realize their full potential and contribute meaningfully to building the nation.

As a learner-centered public institution, the Department of Education continuously improves itself to better serve its stakeholders.

## Team Vision

By 2022, DepEd is a modern, professional, pro-active, nimble, trusted and nurturing institution delivering quality, accessible, relevant and liberating K to 12 Education, enabling our learners to be nation-loving, resilient and competent lifelong learners

## Core Values

- Maka-Diyos • Makatao • Makakalikasan • Makabansa

# Mission

To protect and promote the right of every Filipino to quality, equitable, culture-based and complete basic education where:

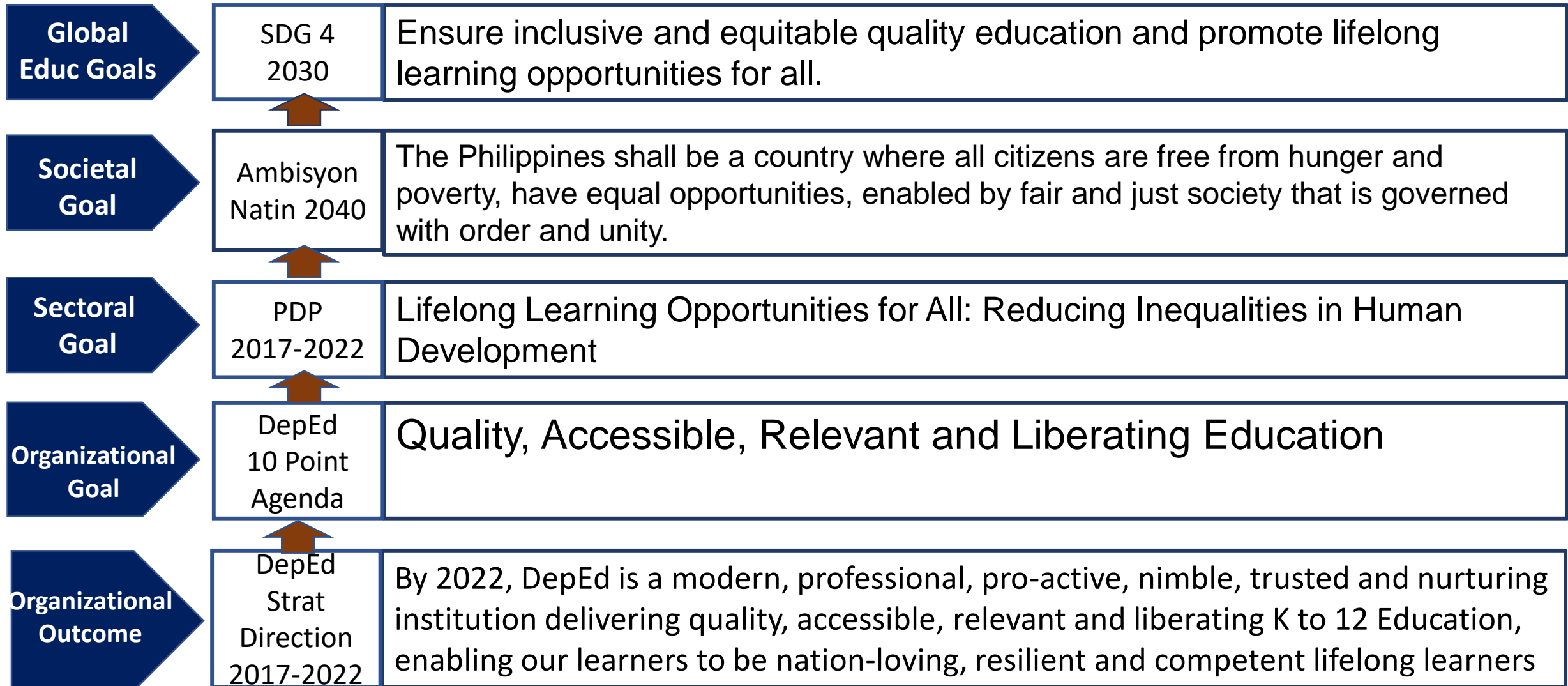
**Students** learn in a child-friendly, gender-sensitive, safe and motivating environment;

**Teachers** facilitate learning and constantly nurture every learner;

**Administrators and staff**, as stewards of the institution, ensure an enabling and supportive environment for effective learning to happen; and

**Family, community and other stakeholders** are actively engaged and share responsibility for developing lifelong learners.

# Development Frameworks and Priorities



# Planning and M&E Framework

**Goal:**  
All Filipinos are able to realize their full potential and contribute meaningfully to building a cohesive nation

**Outcome:**  
Holistically developed Filipinos with 21<sup>st</sup> Century skills ready for higher education, entrepreneurship and work

**Intermediate Outcomes:**

Learners are well-rounded, happy and smart

Learners are in school and learning centers

Learners access programs responsive to their needs and consistent with their interests and aptitudes

Learners actively participate in a learner-friendly environment

Learners complete education and attain learning standards

**Enabling Environment**

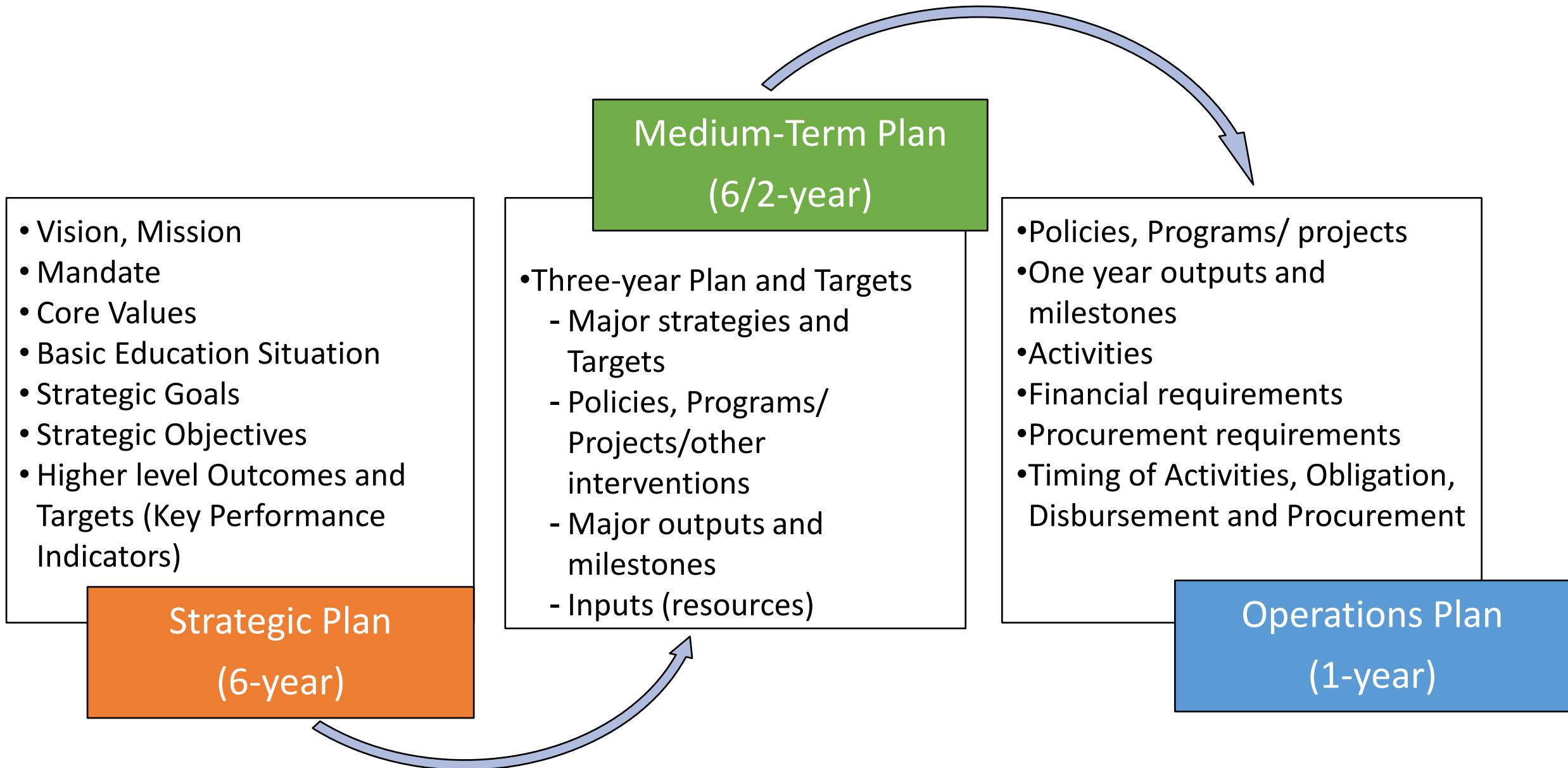
Education leaders and managers practice participative and inclusive management processes.

Investments in Basic Education provides learners with ideal learning environment

People, internal systems, and processes serve learners better through continuous improvement efforts

Key stakeholders actively collaborate to serve learners better

# Planning Phases



# DepEd Strategic Directions (2017-2022)

TEAM  
VISION

By 2022, we will have nation-loving and competent lifelong learners able to respond to challenges and opportunities through quality, accessible, relevant and liberating K to 12 Program delivered by a modern, professional, pro-active, nimble, trusted and nurturing DepEd

STRATEGIC  
GOAL

**Expand Access to Basic  
Education**

**Improve Quality and  
Relevance**

**Modernize Education  
Management & Governance**

STRATEGIC  
OBJECTIVES  
(Strategies)

- Expand coverage of Inclusion Programs
- Expand access to Secondary Education
- Provide non-classroom facilities in remote and isolated schools
- Improve Partnership building and linkages

- Maintain ideal ratios of basic education inputs
- Improve Quality of Teachers
- Expand the use of Technology for Learning
- Enrich curricula to address cross-cutting issues and foster critical thinking towards Liberating Basic Education

- Automate core systems and processes (e-Governance)
- Improve Procurement and Finance System
- Accelerate Research & Dev't
- Improve DepEd Independence from interference
- Improve Human Resource and Development

# DepEd Strategic Directions (2017-2022)

## TEAM VISION

By 2022, DepEd is a modern, professional, pro-active, nimble, trusted and nurturing institution delivering quality, accessible, relevant and liberating K to 12 Education, enabling our learners to be nation-loving, resilient and competent lifelong learners

## STRATEGIC GOAL

**Expand Access to Basic Education**

**Improve Quality and Relevance**

**Modernize Education Management & Governance**

## STRATEGIC OBJECTIVES (Strategies)

- By 2022, 75% of ES and 95% of HS are capable to offer inclusion programs
- By 2022, number of secondary schools is increased by 25%.
- By 2022, 50% of identified remote schools are given non-classroom facilities.
- By 2022, DepEd partnership systems and processes is transformed into a “one-stop-shop” center.

- By 2022, 98% of Schools achieved ideal ratio on Classroom, Seats, Teachers, WATSAN, Textbooks, Tools & equipment.
- By 2022, 90% of teachers are trained on both content and pedagogy.
- By 2022, 100% schools with electricity are provided with ICT package and teachers are trained on the use of technology.
- By 2022, basic education curricula is fully enriched with cross-cutting issues (GAD, GC, Sexuality Ed, Climate Change, Peace and Devt., appreciation of Culture and History)

- By 2022, Information System for Learner, School, HR, Learning Resources, M&E, Assessment and Finance are fully in-placed and automated.
- By 2022, Procurement Process is fully automated and modernized
- By 2022, 100% of DepEd policies and program are researched based.
- By 2022, DepEd M&E system is fully in-placed and automated across all levels.
- By 2022, Training and Development system is in-placed and implemented.



# DepEd Strategic Directions (2017-2022)

TEAM  
VISION

By 2022, DepEd is a modern, professional, pro-active, nimble, trusted and nurturing institution delivering quality, accessible, relevant and liberating K to 12 Education, enabling our learners to be nation-loving, resilient and competent lifelong learners

STRATEGIC  
GOAL

## Expand Access to Basic Education

### Baseline

#### Net Enrolment Rate (2017):

Kindergarten: 83.7%

Elementary: 93.9%

Secondary: 75.9

#### Cohort Survival Rate (2016):

Elementary: 94.2%

Secondary: 84.6%

#### Completion Rate (2016):

Elementary: 92.7%

Secondary: 82.4%

## Improve Quality and Relevance

### Baseline (2015)

#### National Achievement Test (MPS):

Elementary : 69.1%

Secondary : 53.8%

Completers 70%

A&E Passers 56%

NC Passing Rate

## Modernize Education Management & Governance

### Baseline (2017)

#### Teacher to Learner Ratio

Elem – 1:31; HS – 1:26

#### Classroom to Learner Ratio

Elem – 1:33; HS – 1:44

Seat to Learner Ratio – 1:1 All levels

#### Textbook to Learner Ratio –

#### WATSAN to Pupil Ratio –

#### Interquartile Ratio (2016):

Elem – 1:79 HS- 1:78

(these indicators are considered indicators of governance since these are results of management decisions aided by evidence generated from Information systems).

OUTCOME  
INDICATORS

# DepEd Strategic Directions (2017-2022)

## STRATEGIC GOAL

## Expand Access to Basic Education

## STRATEGIC OBJECTIVES (Strategies)

Targets	Baseline (2017)	Offices
By 2022, <b>75%</b> of ES and <b>95%</b> of HS are capable to offer inclusion programs	This is related to the concept of “one-stop-shop” concept of school – that all schools are capable to cater to the educational needs of all kinds of learners. Nee to set the standards first	BLD (Lead), BCD, BLR
By 2022, number of secondary schools is increased by <b>25%</b> .	<b>Number of Secondary Schools:</b> Pure JHS – 1,779 JS in Elem School– 496 JHS and SHS in Elem School – 353 JHS with SHS – 5,925	EFD (Lead), Planning
By 2022, <b>50%</b> of identified remote schools are given non-classroom facilities.	To be identified using remoteness index	EFD (Lead), Planning
By 2022, DepEd partnership systems and processes is transformed into a “one-stop-shop” center.	Target is subject for revision by the office of Usec Umali	

# DepEd Strategic Directions (2017-2022)

STRATEGIC  
GOAL

## Improve Quality and Relevance

STRATEGIC  
OBJECTIVES  
(Strategies)

Targets	Baseline (2017)	Offices
By 2022, <b>98%</b> of Schools achieved ideal ratio on Classroom, Seats, Teachers, WATSAN, Textbooks, Tools and equipment.	<b>Teacher to Learner Ratio</b> Elem – 1:31; HS – 1:26 <b>Classroom to Learner Ratio</b> Elem – 1:33; HS – 1:44 <b>Seat to Learner Ratio</b> – 1:1 All levels <b>Textbook to Learner Ratio</b> – <b>WATSAN to Pupil Ratio</b> – <b>Number of Schools with water supply:</b> Elem – 32,215; HS – 7,333	BLR (Lead), EFD, PS
By 2022, <b>90%</b> of teachers are trained on both content and pedagogy.	No clear baseline (to be provided by NEAP or BCD)	NEAP (Lead), BHROD, BCD
By 2022, <b>100%</b> schools with electricity are provided with ICT package and teachers are trained on the use of technology.	<b>Number of energized Schools</b> Elem – 35,77; HS – 8,034 <b>Number of Schools with Internet:</b> Elem – 12,313; HS – 2,979 <b>Number of Functional Computer:</b> Elem - 314,578; HS - 383,878	ICTS (Lead), NEAP
By 2022, basic education curricula is fully enriched with cross-cutting issues (GAD, GC, Sexuality Ed, Climate Change, Peace and Devt., appreciation of Culture and History)	CI to provide update	BCD (Lead) , BLD, DRRMS

# DepEd Strategic Directions (2017-2022)

## STRATEGIC GOAL

## Modernize Education Management & Governance

## STRATEGIC OBJECTIVES (Strategies)

Targets	Baseline (2017)	Offices
<ul style="list-style-type: none"><li>By 2022, Information System for Learner, School, HR, Learning Resources, M&amp;E and Finance are fully in-placed and automated.</li></ul>	LIS, EBEIS, HRIS – existing but needs enhancement	ICTS (Lead)
<ul style="list-style-type: none"><li>By 2022, Procurement and Finance Process are fully automated and modernized</li></ul>	Roadmap has been developed	PMS and FS
<ul style="list-style-type: none"><li>By 2022, all DepEd policies and program are researched based.</li></ul>	Standard process with policy cover is in-placed;	PS (Lead)
<ul style="list-style-type: none"><li>By 2022, DepEd M&amp;E system is fully in-placed and automated across all levels.</li></ul>	PMIS for progress monitoring is in-placed	PS and ICTS
<ul style="list-style-type: none"><li>By 2022, Training and Development system is in-placed and implemented.</li></ul>	CPD mechanism is fully in-placed	NEAP, BHROD

# Programs, Projects and Activities

Strategic Goal	Core Strategies (Objectives)	Support Programs, Projects and Activities	Baseline Data
<b>Expand Access to Basic Education</b>	Expand coverage of Inclusion Programs	<ul style="list-style-type: none"> <li>• Multigrade Education Program</li> <li>• Madrasah Education Program</li> <li>• Indigenous Peoples Education (IPEd) Program</li> <li>• Special Education Program (SPED)</li> <li>• Alternative Learning System and ADM</li> <li>• Child Protection Program</li> <li>• School-Based Feeding Program</li> <li>• Complete all Incomplete schools into MG school</li> </ul>	
	Expand access to Secondary Education	<ul style="list-style-type: none"> <li>• Establish/Open more Junior and Senior High School</li> <li>• Expand Coverage of ESC, Voucher Program and Joint Delivery Strategy for TVL</li> </ul>	
	Provide non-classroom facilities in remote and isolated schools	<ul style="list-style-type: none"> <li>• Build Dormitories to school that are remote and geographically isolated</li> <li>• Accelerate Pedals and Paddles project</li> </ul>	
	Improve Partnership building and linkages	<ul style="list-style-type: none"> <li>• Strengthen Brigada Eskwela</li> <li>• Expand Adopt a School Program</li> </ul>	

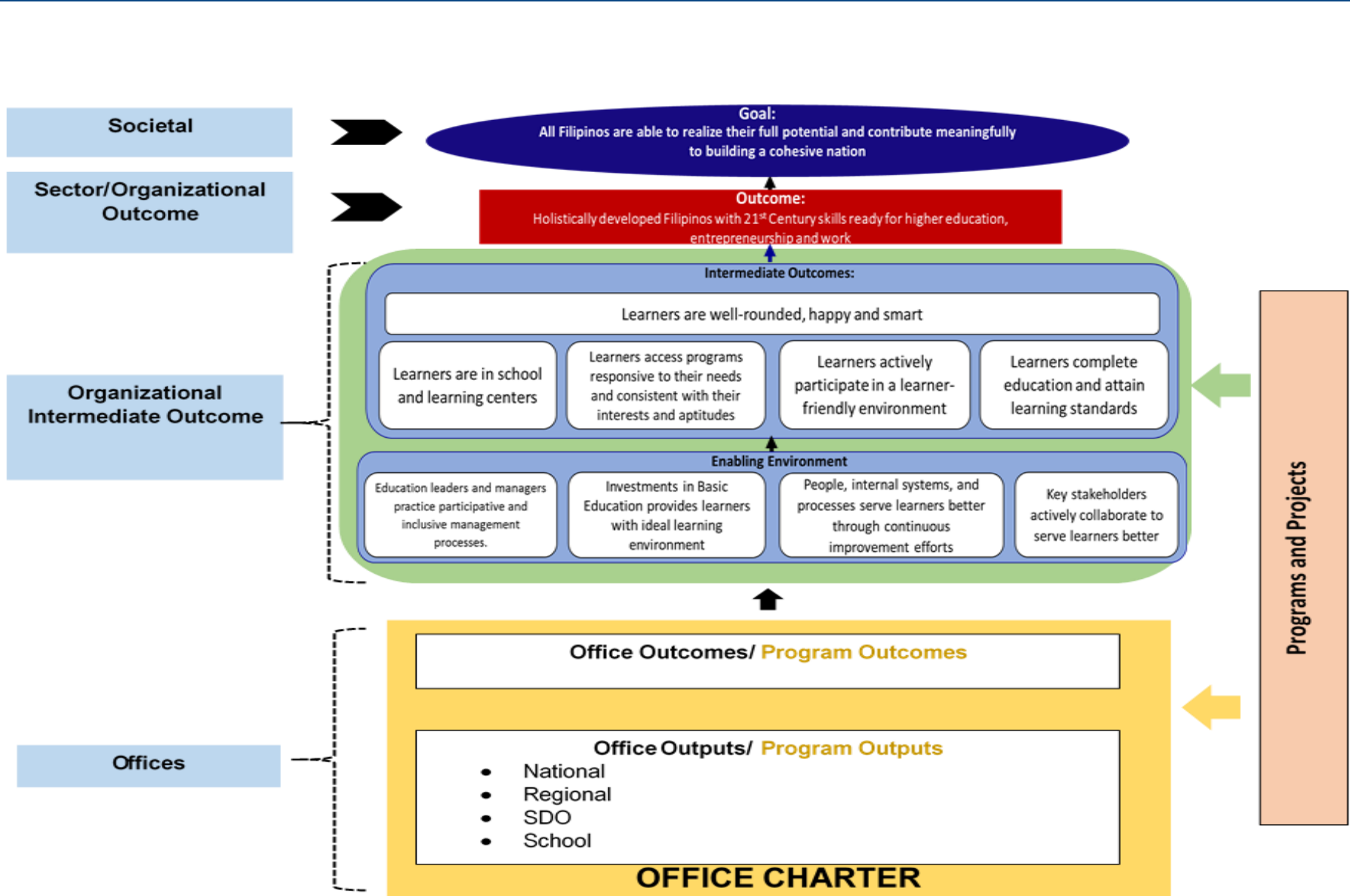
# Programs, Projects and Activities

Strategic Goal	Core Strategies (Objectives)	Support Programs, Projects and Activities	Baseline
<b>Improve Quality and Relevance</b>	Full implementation of K to 12 Program	<ul style="list-style-type: none"> <li>• School Facilities</li> <li>• Teaching Positions and Non-Teaching Positions</li> <li>• Tools and Equipment (by strand)</li> <li>• Assessment</li> <li>• Textbooks and other Instructional Materials</li> </ul>	
	Improve Quality of Teachers	<ul style="list-style-type: none"> <li>• Intensive Retooling teachers particularly those handling SPED, ALS</li> <li>• Improve Pre-Service Curriculum</li> <li>• Improve hiring and promotion policy</li> </ul>	
	Expand the use of Technology for Learning	<ul style="list-style-type: none"> <li>• Computerization Program</li> <li>• Learning Tools and Equipment</li> <li>• Expand access to Learning Resource Portal</li> <li>• Internet Connectivity</li> </ul>	
	Enrich curricula to address cross-cutting issues and foster critical thinking towards Liberating Basic Education	<ul style="list-style-type: none"> <li>• Drug Prevention Education</li> <li>• Gender and Development</li> <li>• Climate Change Mitigation and Adaptation</li> <li>• Sex Education</li> <li>• Peace Education</li> <li>• Promotion and appreciation of history, culture, arts and literature</li> </ul>	

# Programs, Projects and Activities

Strategic Goal	Core Strategies (Objectives)	Support Programs, Projects and Activities	Baseline
Modernize Education Management and Governance	Automate core systems and processes (e-Governance)	<ul style="list-style-type: none"> <li>• Strengthen existing Information Systems</li> <li>• Develop and Implement FMIS and other system that would improve operations, cut-down red tape and ensure full transparency</li> <li>• Connect all operating Units</li> </ul>	
	Improve Procurement and Finance Process	<ul style="list-style-type: none"> <li>• Improve Procurement Planning</li> <li>• Improve Planning Process</li> </ul>	
	Accelerate Research and Development	<ul style="list-style-type: none"> <li>• Action Research</li> <li>• Accelerate Impact Evaluation</li> </ul>	
	Improve DepEd Independence from interference	<ul style="list-style-type: none"> <li>• Evidence-based planning and policy development</li> <li>• Improve Monitoring and Evaluation System</li> </ul>	
	Improve Human Resource and Development	<ul style="list-style-type: none"> <li>• Improve leadership and management skills of DepEd Officials</li> <li>• Expand Employee Welfare Program</li> <li>• Capacity Building for Non-Teaching Personnel</li> </ul>	

# Achieving the Agency Goals



Sustainable Development Goal No. 4

Ambisyon Natin 2040; Philippine Development Plan 2017-2022; National Evaluation Policy Framework; Result-based Monitoring & Evaluation and Reporting Policy

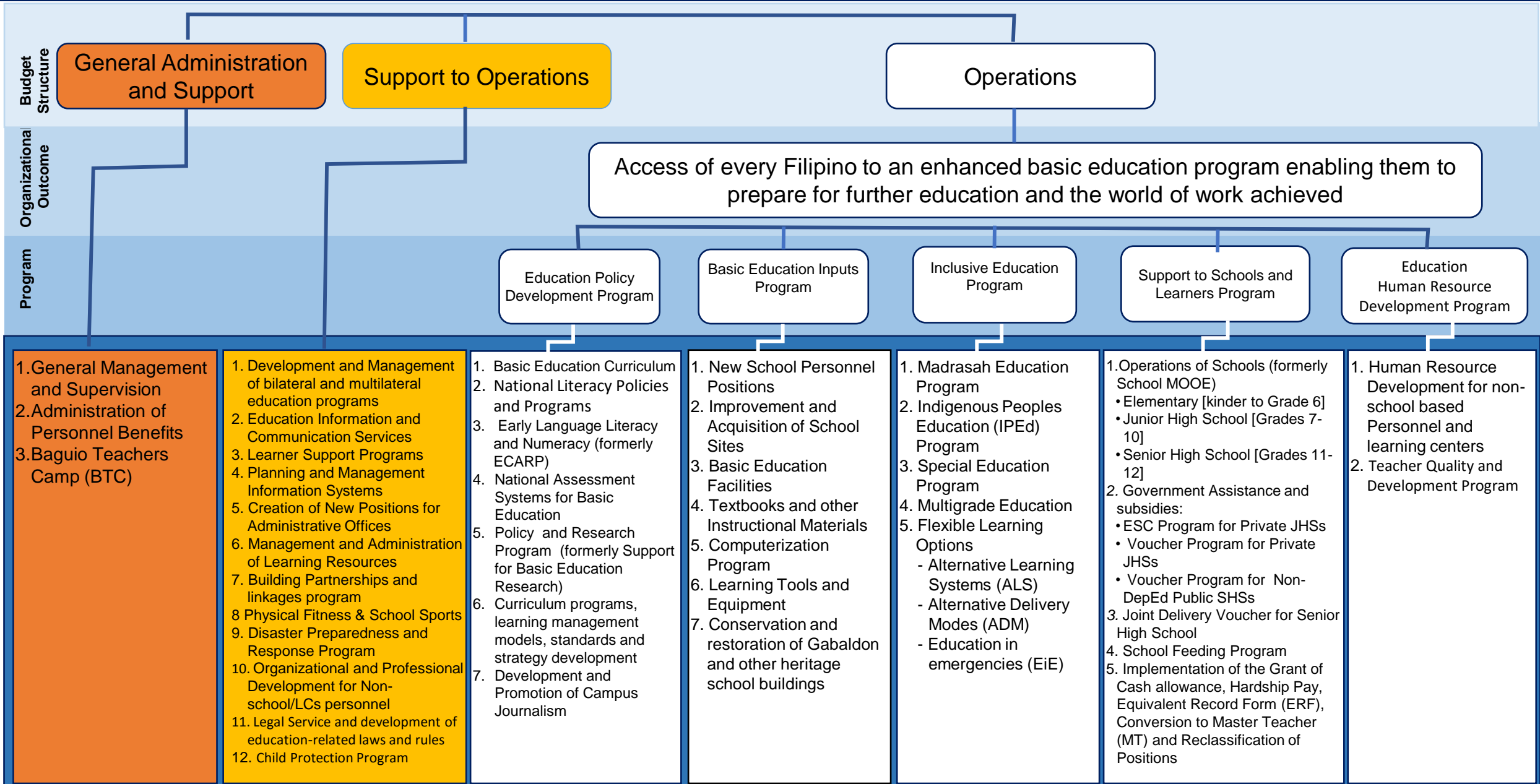
DepEd Vision and Mission and Core Values

- Strategic Plans**
- NEDP
  - REDP
  - DEDP
  - SIP
  - Program Roadmap

- Operational Plans**
- WFP
  - Annual Plans
  - OPCRF/IPCRF



# Program Expenditure Classification (PREXC)



# PDP Targets for Basic Education (Outcomes)

Indicators	Baseline	Targets						
	2015	2016	2017	2018	2019	2020	2021	2022

By 2022, proportion of School Aged population participating in basic education increased (Net Enrolment Ratio)

Kinder	74.65%	77.56%	80.46%	83.37%	86.28%	89.19%	92.09%	95.00%
Elementary	91.05%	91.61%	92.18%	92.74%	93.31%	93.87%	94.44%	95.00%
Junior High School	68.15%	69.19%	70.23%	71.27%	72.32%	73.36%	74.40%	75.44%
Senior High School	No Baseline Yet							

By 2022, proportion of Learners who enrolled in Grade 1/Grade7 completing Levels of Education increased (Completion Rate)

Elementary	83.43	84.37%	85.31%	86.25%	87.18%	88.12%	89.06%	90.00%
Junior High School	73.97	76.49%	76.82%	77.15%	77.48%	77.82%	78.15%	78.48%
Senior High School	No Baseline Yet							

# PDP Targets for Basic Education (Outcomes)

Indicators	Baseline	Targets						
	2015	2016	2017	2018	2019	2020	2021	2022

By 2022, proportion of students performing at Moving towards mastery, closely approximating mastery and mastered increased from 63.93% to 74.39%

Elementary	63.93%	65.42%	66.92%	68.41%	69.91%	71.40%	72.89%	74.39%
------------	--------	--------	--------	--------	--------	--------	--------	--------

By 2022, proportion of students at low mastery reduced from 14% to 10%, and students at moving towards mastery increased from 14% to 20%

Junior High School	14.37%	15.17%	15.98%	16.78%	17.59%	18.39%	19.20%	20.00%
	14.88%	11.92%	11.72%	11.51%	11.31%	11.11%	10.90%	10.00%
Senior High School	No Baseline Yet							



K

to

12

Every Filipino has access to a complete quality basic education.

Every graduate is prepared for further education and the world of work.

The delivery of basic education services to learners is effective, efficient and collaborative.